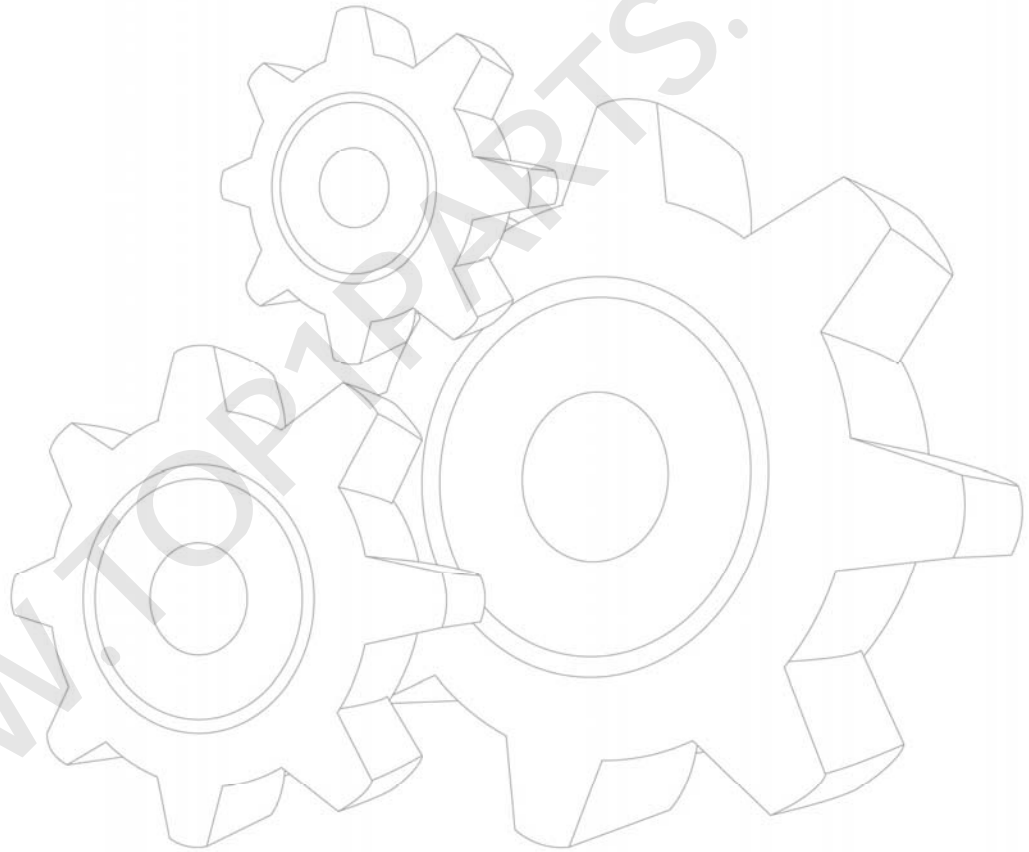




SQ2SK2Q 随车起重机备件图册

SQ2SK2Q Truck-mounted Crane SPARE PARTS CATALOGUE





目次 Contents

前 言.....	II
Preface.....	III
350100271 SQ2SK2Q 随车起重机 SQ2SK2Q Truck-mounted crane	1
350100197 吊臂结构装配 Boom assembly	3
350100136 伸缩油缸 Telescopic cylinder.....	8
350100146 机座回转总成 Slewing base assembly.....	10
转台总成 Column assembly	13
358000224 QS113C 起升减速机 Lifting speed reducer	15
350100179 变幅油缸 Derricking cylinder.....	18
358100130 HZ010C 回转减速机 Slewing speed reducer.....	20
358200022 HF021B 回转分配器 Slewing distributor.....	23
350100172 液压油箱总成 Hydraulic oil tank	25
351400013 支腿油缸 Leg cylinder.....	27
350100154 操纵系统 Control system.....	29
350100211 液压系统布管图 Hydraulic system layout.....	31
总页数.....	34

前 言

衷心感谢您对徐工品牌的信赖和认可并使用徐工生产的 SQ2SK2Q 随车起重机。

本图册提供了SQ2SK2Q随车起重机列为备件的结构及装配关系，旨在方便备件工程师和用户对起重机更好的维修和保养。本图册应配合产品使用说明书共同使用，请您严格按照备件图册进行操作、维护，使SQ2SK2Q随车起重机处于最佳工作状态。

为方便用户备件检索，本图册已将SQ2SK2Q随车起重机的大型结构件及整体采购件拆分至最小可维修单元，在分解图后附有明细表与所示零件一一对应。

本备件图册及其它随车技术文件是SQ2SK2Q随车起重机的组成部分，请在产品寿命期内随车妥善保存，共同作为您使用该SQ2SK2Q随车起重机的必须依据。

我公司保留随技术改进而不断修订《备件图册》内容的权利，如有变更，恕不另行通知，望各位用户予以理解。

2013年10月第2版

Preface

Firstly, thank you for selecting SQ2SK2Q Truck-mounted Crane designed and manufactured by XCMG.

The aim of supplying the catalogue is to facilitate maintenance and service to the SQ2SK2Q Truck-mounted Crane. It should be used together with the operation manual and maintenance manual. Please strictly follow the instructions in operation manual and maintenance manual for operation and maintenance.

There are details for assembly of parts in SQ2SK2Q Truck-mounted Crane, which large structural parts and integrated parts are disassembled into minor maintenance units. There is a list following each detail for user looking up spare parts. Please refer to carrier spare parts catalogue for contents involved with carrier spare parts.

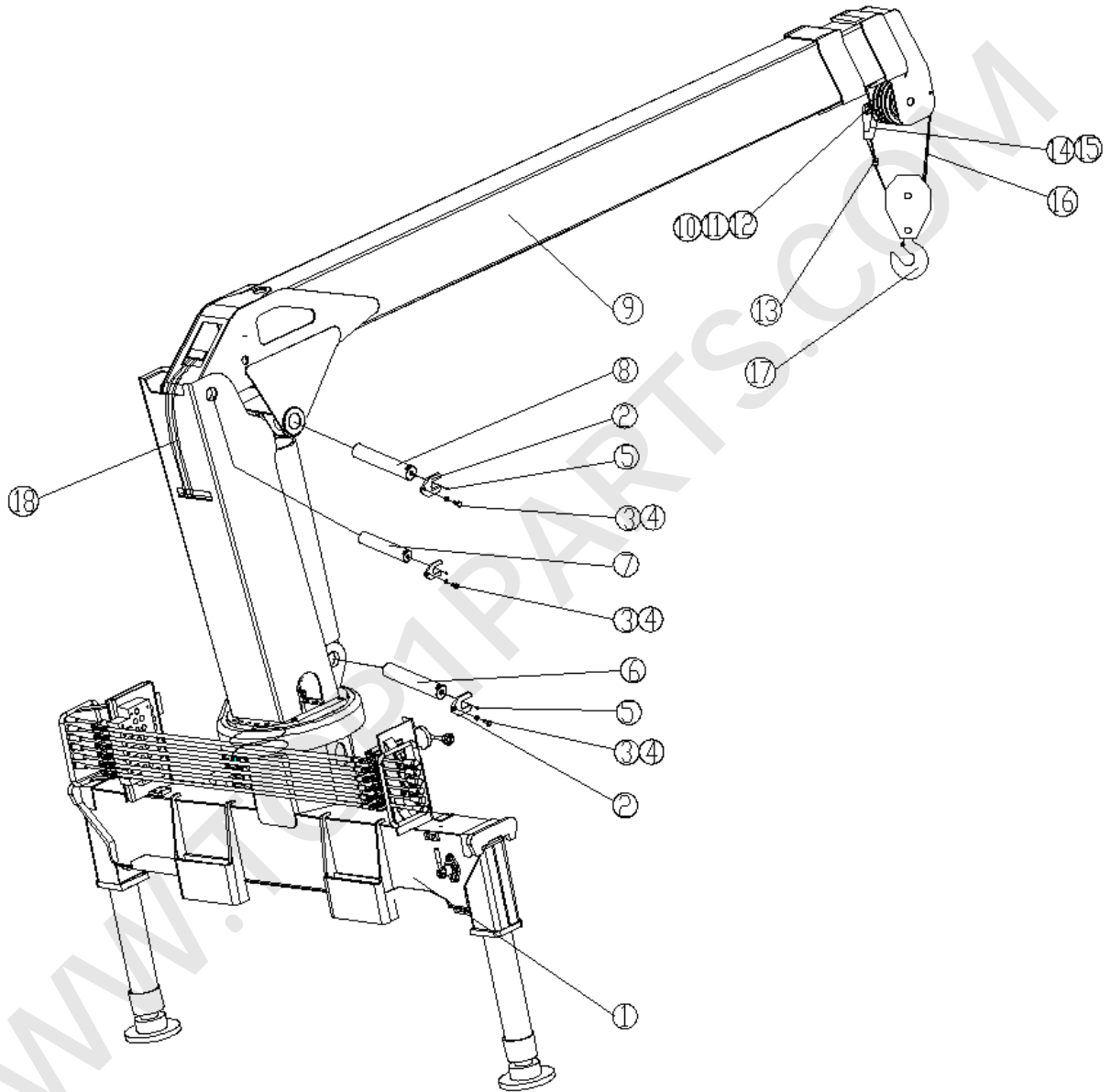
The manual is an integral part of the SQ2SK2Q Truck-mounted Crane. Please keep them handy in the driver's or operator's cab with the supplied technical documents and operate the machine according to instruction in them.

We reserve the right to modify the catalogue for improvement without notice .

10/2013 Second Edition



350100271 SQ2SK2Q 随车起重机 SQ2SK2Q Truck-mounted crane



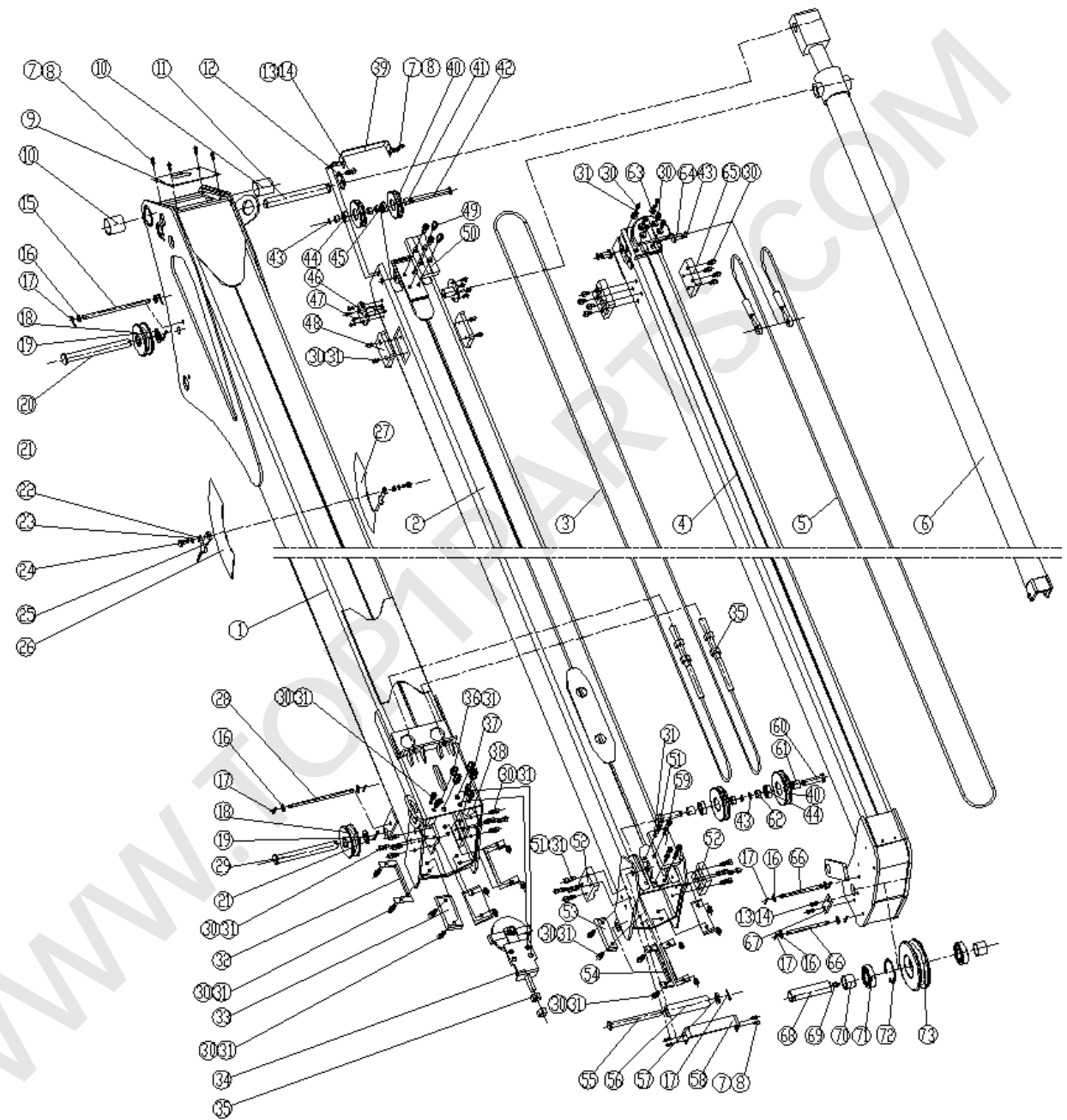


350100271 SQ2SK2Q 随车起重机 SQ2SK2Q Truck-mounted crane

序号 No.	物料代码 Part number	名称 Part Name	推荐数量 Advised Q' ty	备注 Remark
1	350100146	机座回转总成 Slewing base assembly	1	
2	359400019	卡板 Clip board	3	
3	805000018	螺栓 M8×20 Bolt	3	GB/T5783-2000
4	805300010	垫圈 8 Cushion ring	3	GB/T93-1987
5	801100336	油杯 M10×1 Oil cup	3	JB/T7940.1-1995
6	353400009	轴 Shaft	1	
7	353400007	轴 Shaft	1	
8	353400008	轴 Shaft	1	
9	350100197	吊臂总成 Boom assembly	1	
10	350200010	销轴 Pin shaft	1	
11	805600127	开口销 4×50 Pin	1	GB/T91-2000
12	805302849	垫圈 25 Cushion ring	1	GB/T95-2002
13	821502275	钢丝绳夹 8KT Rope clamp	2	GB/T5976-2006
14	350200362	楔 Wedge cover	1	
15	350200363	楔套 Wedge	1	
16	821502289	钢丝绳 8NAT-18×7+IWS-1870-ZS Wire rope	1	GB/T5976-2006
17	353400139	吊钩总成 DG-2.0 Hook assembly	1	
18	350100211	液压系统布管图 Hydraulic system layout	1	



350100197 吊臂结构装配 Boom assembly





350100197 吊臂结构装配 Boom assembly

序号 No.	物料代码 Part number	名称 Part Name	推荐数量 Advised Q' ty	备注 Remark
1	350100122	基本臂 Base boom	1	
2	350100123	第一节伸缩臂 Telescopic boom I	1	
3	350100205	拉绳 Dressing rope	1	
4	350100124	第二节伸缩臂 Telescopic boom II	1	
5	350100206	缩绳 Retracting rope	1	
6	350100136	伸缩油缸 Telescopic cylinder	1	
7	805103994	内六角螺钉 M5×15 Screw	12	GB/T70.1-2008
8	805300109	垫圈 5 Cushion ring	8	GB/T93-1987
9	350100145	封板 Cover board	1	
10	800513818	衬套 45×40×45 Bush	2	
11	353400013	轴 Shaft	1	
12	353400036	卡板 Clip board	1	
13	805000322	螺栓 M6×16 Bolt	2	GB/T5783-2000
14	805300030	垫圈 6 Cushion ring	2	GB/T93-1987
15	353400044	绳挡 Rope ward	1	
16	805302843	垫圈 10 Cushion ring	6	GB/T95-2002
17	805601710	开口销 4×20 End-open pin	5	GB/T91-2000
18	353400156	滑轮 Pulley	2	
19	805302848	垫圈 20 Cushion ring	2	GB/T95-2002
20	353400011	轴 Shaft	1	
21	805600027	开口销 4×36 End-opened pin	2	GB/T91-2000
22	353400020	套 Bush	2	
23	805400056	挡圈 10 Cushion ring	2	GB/T894.1-1986



350100197 吊臂结构装配 Boom assembly

序号 No.	物料代码 Part number	名称 Part Name	推荐数量 Advised Q' ty	备注 Remark
24	805000714	螺栓 M10×20 Bolt	2	GB/T5783-2000
25	350100210	指针 Needle	2	
26	350100208	幅度牌 (右) Rang indicator	1	
27	350100209	幅度牌 (左) Rang indicator	1	
28	350100013	绳挡 Rope ward	1	
29	350100012	轴 Shaft	1	
30	805103586	内六角螺钉 M8×20 Screw	82	GB/T70.1-2000
31	805300010	垫圈 8 Cushion ring	62	GB/T93-1987
32	353400033	挡板 Baffle	2	
33	353400155	滑块 Slide pad	2	
34	353400190	调节机构 Adjustable machine	1	
35	805203156	螺母 M16 Nut	6	GB/T6170-2000
36	805100115	内六角螺钉 M12×25 Screw	4	GB/T70.1-2000
37	353400149	滑块 Slide pad	2	
38	353400148	滑块 Slide pad	2	
39	350100144	挡板 Baffle	1	
40	353400158	滑轮 Pulley	4	
41	353400005	套 Bush	2	
42	353400019	轴 Shaft	1	
43	805400071	轴用挡圈 15 Check ring	5	GB/T894.1-2000
44	800500187	轴承 6202 Bearing	4	GB/T276-1994
45	353400006	隔套 Separate bush	2	
46	353400018	轴 Shaft	2	



350100197 吊臂结构装配 Boom assembly

序号 No.	物料代码 Part number	名称 Part Name	推荐数量 Advised Q' ty	备注 Remark
47	805104243	紧定螺钉 M6×10 Tightness screw	8	GB/T68-2000
48	350100199	滑块 Slide pad	2	
49	805100173	内六角螺钉 M10×20 Screw	4	GB/T70.1-2000
50	353400152	滑块 Slide pad	1	
51	805100037	内六角螺钉 M8×25 Screw	12	GB/T70.1-2000
52	353400147	滑块 Slide pad	2	
53	353400154	滑块 Slide pad	2	
54	353400032	挡板 Baffle	2	
55	350100011	轴 Shaft	1	
56	350100200	尼龙套 Nylon bush	1	
57	805300013	垫圈 16 Cushion ring	2	GB/T97.1-2002
58	353400041	弯板 Bend board	1	
59	350100198	滑块 Slide pad	1	
60	353400014	轴 Shaft	2	
61	353400015	套 Bush	2	
62	353400016	套 Bush	2	
63	353400035	角板 Board	2	
64	353400017	轴 Shaft	2	
65	353400151	滑块 Slide pad	2	
66	353400045	绳挡 Rope ward	2	
67	353400043	卡板 Clip board	1	
68	353400012	轴 Shaft	1	
69	801103108	油杯 M10×1 Oil cup	1	GB/T1153-2000



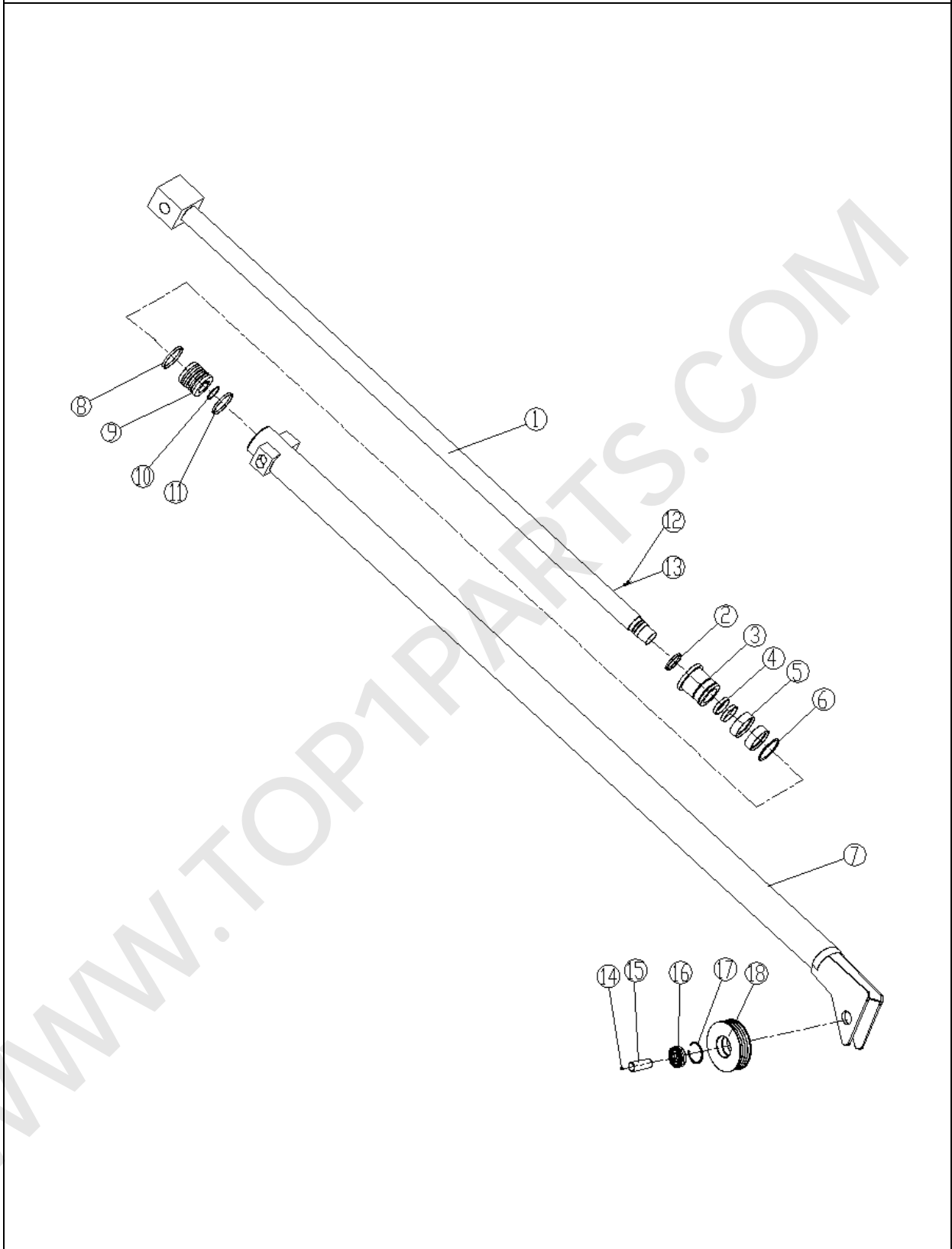
350100197 吊臂结构装配 Boom assembly

序号 No.	物料代码 Part number	名称 Part Name	推荐数量 Advised Q' ty	备注 Remark
70	350100004	隔套 Separate bush	2	
71	800513882	轴承 60206 Bearing	4	GB/T278-2000
72	805401235	孔用挡圈 65 Check ring	1	GB/T893.1-2000
73	353400157	滑轮 Pulley	4	

WWW.TOP1PARTS.COM



350100136 伸缩油缸 Telescopic cylinder



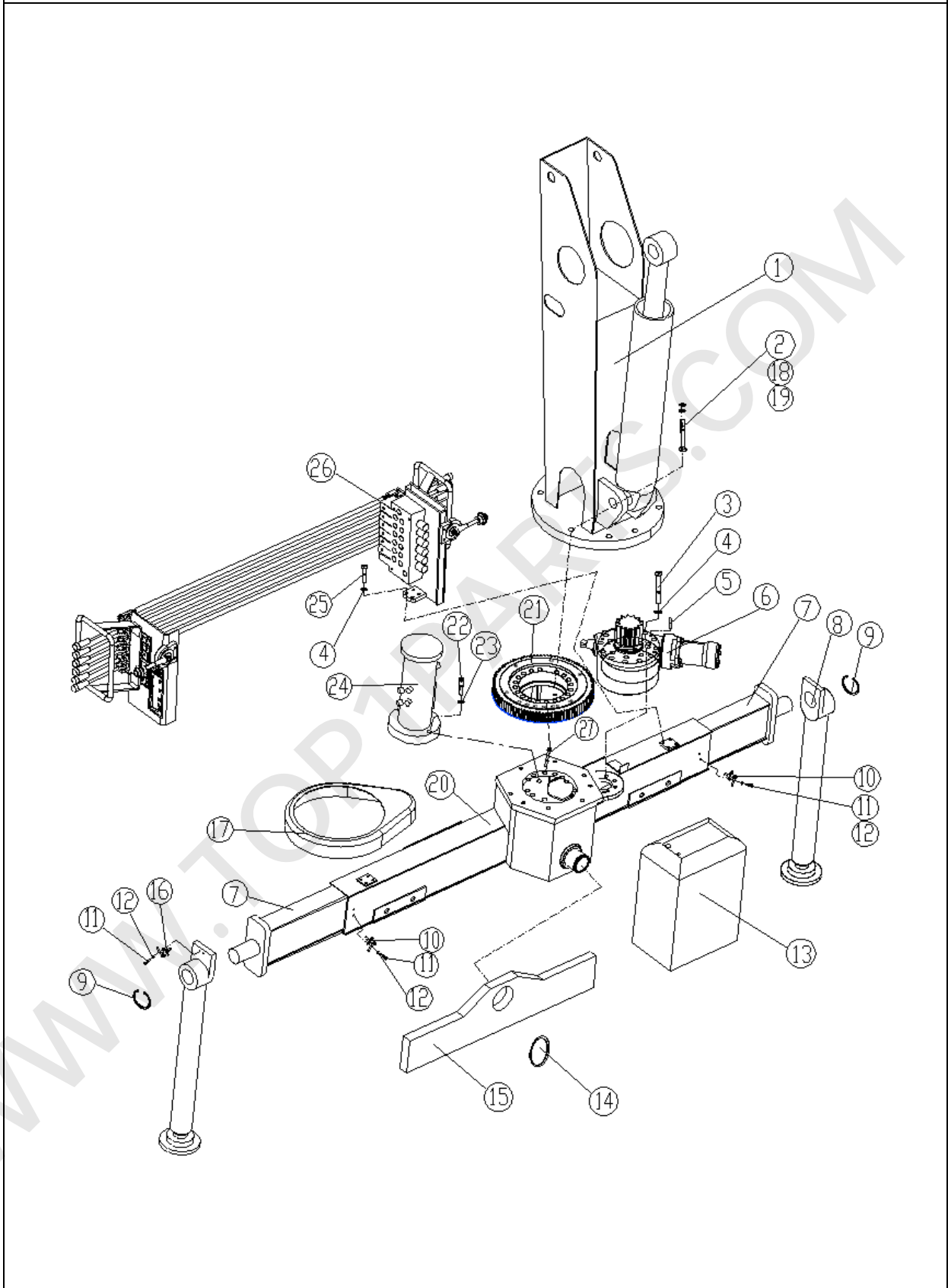


350100136 伸缩油缸 Telescopic cylinder

序号 No.	物料代码 Part number	名称 Part Name	推荐数量 Advised Q' ty	备注 Remark
1	——	活塞杆 Piston pole	1	
2	——	防尘圈 d45×53×6.5 Dustproof ring	1	-
3	——	缸盖 Cylinder cover	1	
4	——	轴用支承环 d45×9.4× 2.5 Support ring	2	-
5	——	轴封 d45×55×6 Seal for shaft	2	-
6	——	O 型圈 63×5.7 O-ring	1	GB1235-76
7	——	缸体 Cylinder	1	
8	——	隔套 Separate bush	1	
9	——	活塞 Piston	1	
10	——	O 型圈 30×3.1 O-ring	1	GB1235-76
11	——	孔封 Seal for hole	1 组	-
12	——	长圆紧定螺钉 M8×10 Screw	1	GB79-85
13	——	螺母 M30×2 Nut	1	
14	860104923	油嘴 M6×1 Oil nipple	1	GB1153-79
15	——	销轴 Pin shaft	1	
16	——	铜背轴承 Φ20×Φ23-30 Bearing	1	-
17	805401263	轴用弹挡 20 Check ring	1	GB894.2-86
18	——	滑轮 Pulley	1	



350100146 机座回转总成 Slewing base assembly





350100146 机座回转总成 Slewing base assembly

序号 No.	物料代码 Part number	名称 Part Name	推荐数量 Advised Q' ty	备注 Remark
1	350100120	转台焊接 Column	1	
2	805000650	螺栓 M16×100 Bolt	10	GB/T5782-2000
3	805000137	螺栓 M8×40 Bolt	13	GB/T5783-2000
4	805300010	垫圈 8 Gasket	25	GB/T93-1987
5	805603534	销 6×40 Pin	2	GB/T119.1-2000
6	358100130	回转减速机 Slewing reducer	1	HZ010C
7	350100121	活动腿 Stabilizer extension	1	
8	351400013	支腿油缸 Leg cylinder	2	
9	805400008	轴用挡圈 60 Check ring	2	GB/T894.2-1986
10	359400179	锁紧总成 Locking assembly	2	
11	805100173	螺钉 M10×20 Screw	8	GB/T70.1-2000
12	805300014	垫圈 10 Gasket	8	GB/T93-1987
13	350100172	油箱安装 Oil tank	1	
14	805403072	轴用挡圈 70 Check ring	1	GB/T894.2-1986
15	350100016	支架 Bracket	1	
16	359400177	锁紧总成 Locking assembly	2	
17	353400163	防尘罩总成 Dust boot	1	
18	805200116	螺母 M16 Nut	10	GB/T6172.1-2000
19	805200246	螺母 M16 Nut	10	GB/T6170-2000
20	350100119	机座 Pedestal	1	
21	800513767	回转支承 Slewing	1	QWA.315.20
22	805000013	螺栓 M16×35 Bolt	10	GB/T5783-2000
23	805300011	垫圈 16 Gasket	2	GB/T93-1987



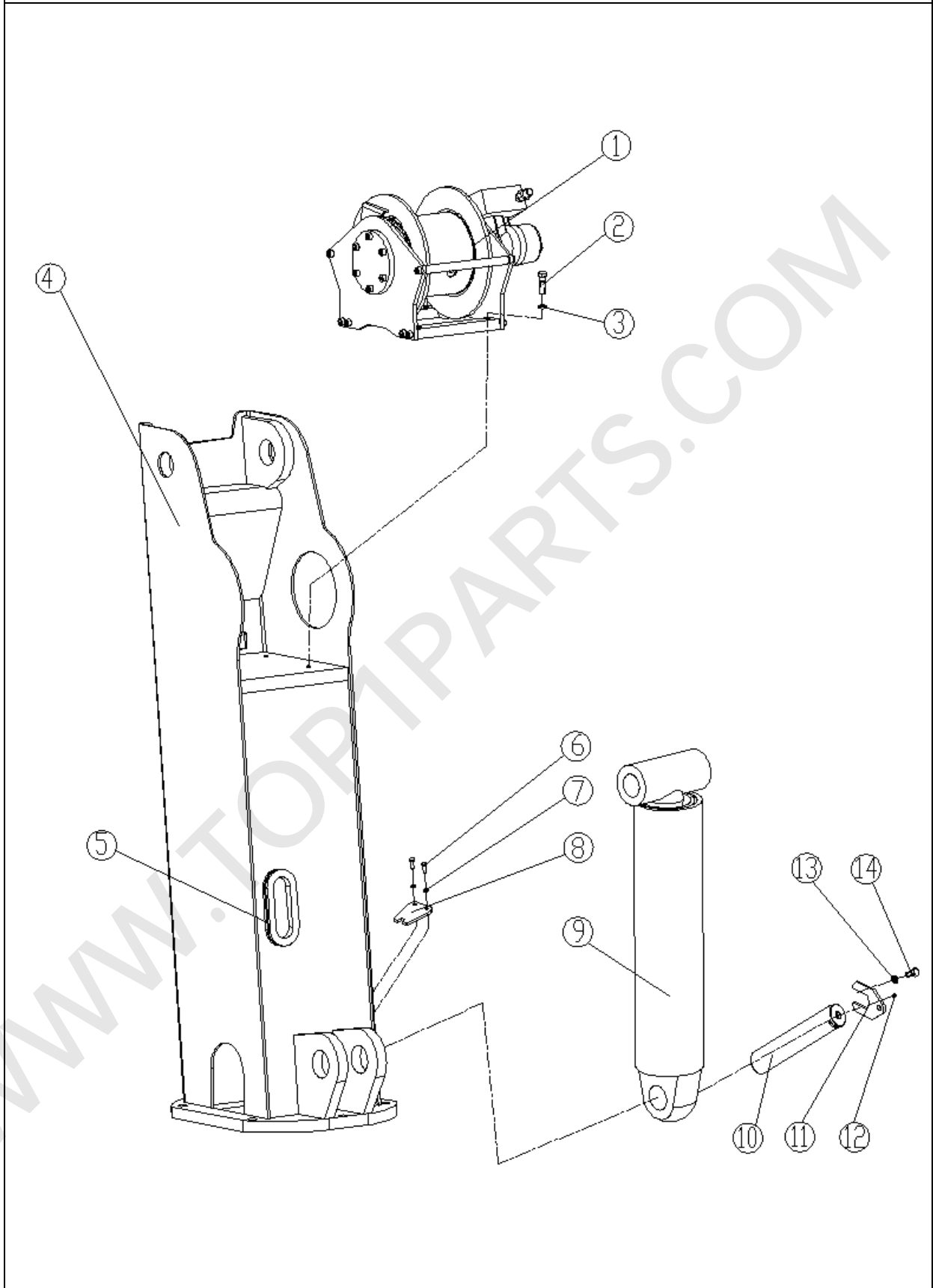
350100146 机座回转总成Slewing base assembly

序号 No.	物料代码 Part number	名称 Part Name	推荐数量 Advised Q' ty	备注 Remark
24	358200022	回转分配器 Slewing distributor	1	HF012B
25	805100037	螺栓 M8×25 Bolt	20	GB/T70.1-2008
26	350100154	操纵系统 Control system	1	
27	805000579	螺栓 M16×90 Bolt	10	GB/T5782-2000

WWW.TOP1PARTS.COM



转台总成 Column assembly



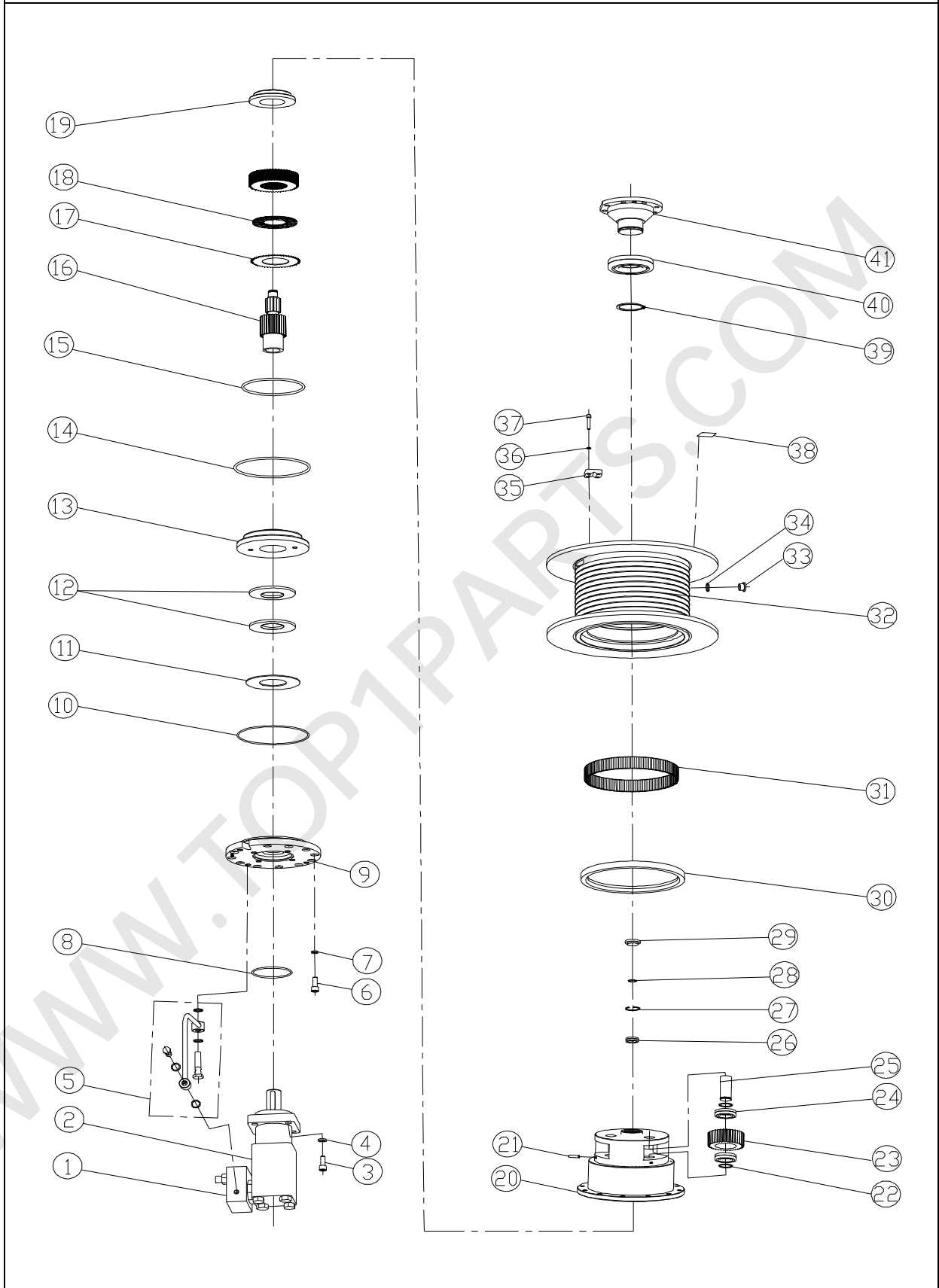


转台总成 Column assembly

序号 No.	物料代码 Part number	名称 Part Name	推荐数量 Advised Q' ty	备注 Remark
1	358000224	起升减速机 Lifting speed reducer	1	QS113C
2	805100037	螺钉 M8×25 Bolt	20	GB/T70.1-2008
3	805300010	垫圈 8 Cushion ring	25	GB/T93-1987
4	350100120	转台 Column	1	
5	350200241	护套 Bush	2	
6	805000043	螺栓 M10×30 Bolt	2	GB/T5783-2000
7	805300014	垫圈 10 Cushion ring	10	GB/T93-1987
8	350100015	连接板 Joint shaft	1	
9	350100179	变幅油缸 Derricking cylinder	1	
10	353400009	轴 Shaft	1	
11	359400019	卡板 Clip board	1	
12	801103108	油杯 M10×1 Oil cup	1	GB/T1153-2000
13	805300010	垫圈 8 Cushion ring	1	GB/T93-1987
14	805000018	螺栓 M8×20 Bolt	1	GB/T5783-2000



358000224 QS113C 起升减速机 Lifting speed reducer





358000224 QS113C 起升减速机 Lifting speed reducer

序号 No.	物料代码 Part number	名称 Part Name	推荐数量 Advised Q' ty	备注 Remark
1	803007863	平衡阀 Balance valve	1	CBPA-B-OMS-C1
2	803007702	马达 Motor	1	BM3-125PAIIY
3	805100115	螺钉 M12X25 Screw M12X25	4	GB/T70.1
4	805300018	垫圈 12 Gasket 12	4	GB/T93
5	358000171	油管 Oil tube	1	
6	805100064	螺钉 M8X20 Screw M8X20	6	GB/T70.1
7	805300010	垫圈 8 Gasket 8	6	GB/T93
8	803175015	O 形圈 82.22X2.62 O-ring 82.22x2.62	1	C92
9	358000226	端盖 Cover	1	
10	803175031	O 形圈 98X3 O-ring 98X3	1	EKM
11	358000073	调整垫 Adjustable cushion	1	
12	801702810	碟簧 90X46X3.5X6 Dish spring 90x46x3.5x6	2	GB/T1972
13	358000071	活塞 Piston	1	
14	803174871	O 形圈 103X3.55 O-ring 103X3.55	1	C92
15	803175866	O 形圈 87.5X3.55 O-ring 87.5X3.55	1	C92
16	358000145	太阳轮 Sun wheel	1	
17	358000247	摩擦静片 Static slice	9	
18	358000248	摩擦动片 Dynamic slice	8	
19	358000117	挡板 Baffle	1	
20	358000130	筒芯 Cylinder core	1	
21	805005415	螺钉 M6X15 Screw M6X15	3	GB/T79
22	358000116	行星垫 Planet cushion	6	
23	358000112	行星轮 Planet wheel	3	

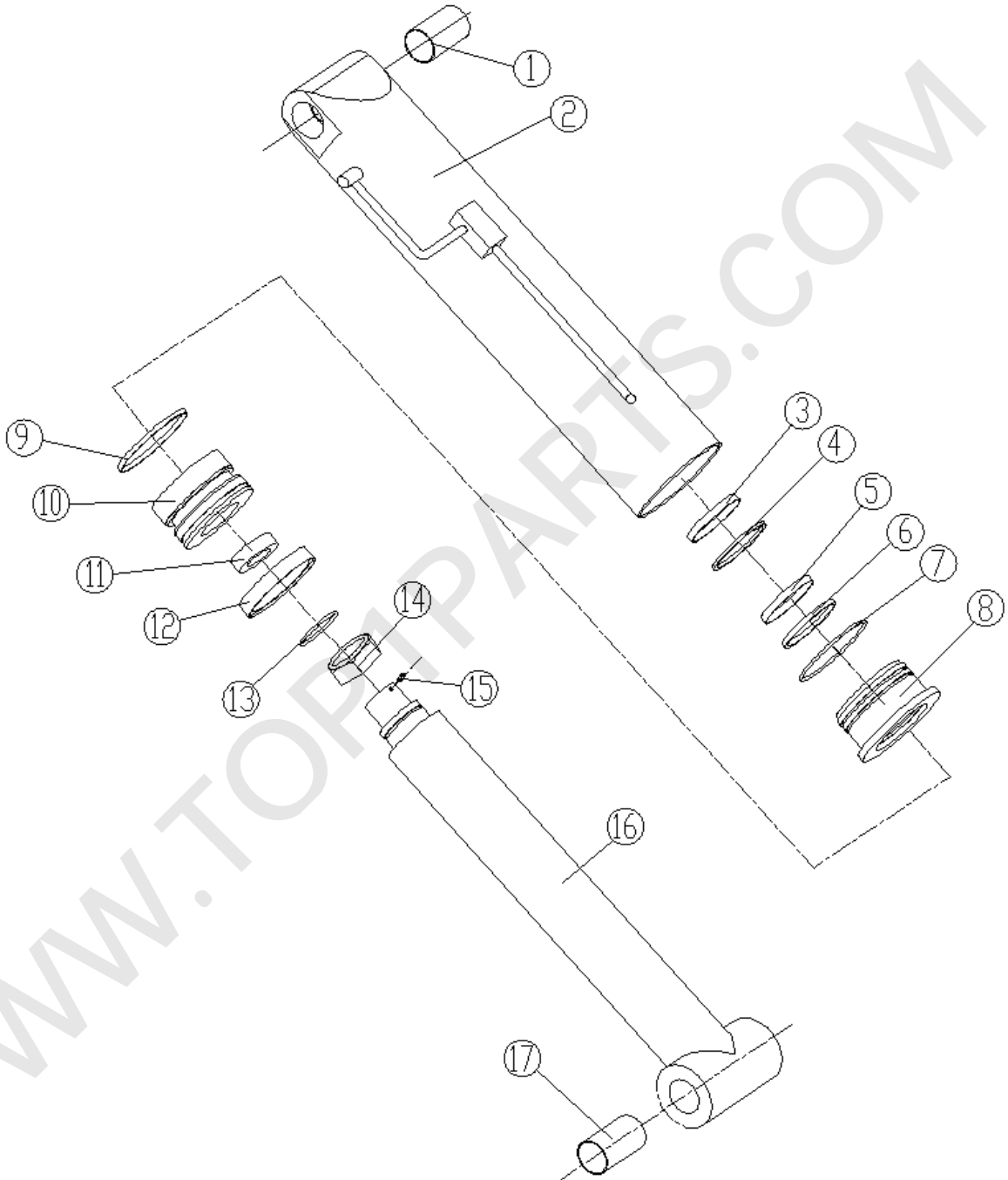


358000224 QS113C起升减速机 Lifting speed reducer

序号 No.	物料代码 Part number	名称 Part Name	推荐数量 Advised Q' ty	备注 Remark
24	800513877	轴承 NA4903 Bearing NA4903	6	GB/T5801
25	358000119	行星轴 Planet shaft	3	
26	800513719	轴承 NA4902 Bearing NA4902	1	GB/T5801
27	805400011	挡圈 28 Check ring 28	1	GB/T893.1
28	805400071	挡圈 15 Check ring 15	1	GB/T894.1
29	358000266	顶塞 Plug	1	
30	803175106	油封 125X150X12 Oil seal 125X150X12	1	SN70-TC
31	800513901	滚针 P3X15.8 Roll needle P3X15.8	134	GB/T309
32	358000228	筒体组件 Cylinder	1	GB/T309
33	803174310	螺塞 M16X1.5 Screw hread plug M16X1.5	3	
34	801903029	密封垫 16X20 Sealed cushion 16X20	3	JB/ZQ4444
35	358000243	压板 Press board	1	JB/ZQ4454
36	805300030	垫圈 6 Gasket 6	4	
37	805100059	螺钉 M6X20 Screw M6X20	4	GB/T93
38	358000245	起升减速机标牌 Label	1	GB/T70.1
39	805400021	挡圈 45 Check ring 28	1	GB/T827
40	800513884	轴承 6209-2Z Bearing 6209-2Z	1	GB/T894.1
41	358000108	端盖 Cover	1	GB/T276



350100179 变幅油缸 Derricking cylinder



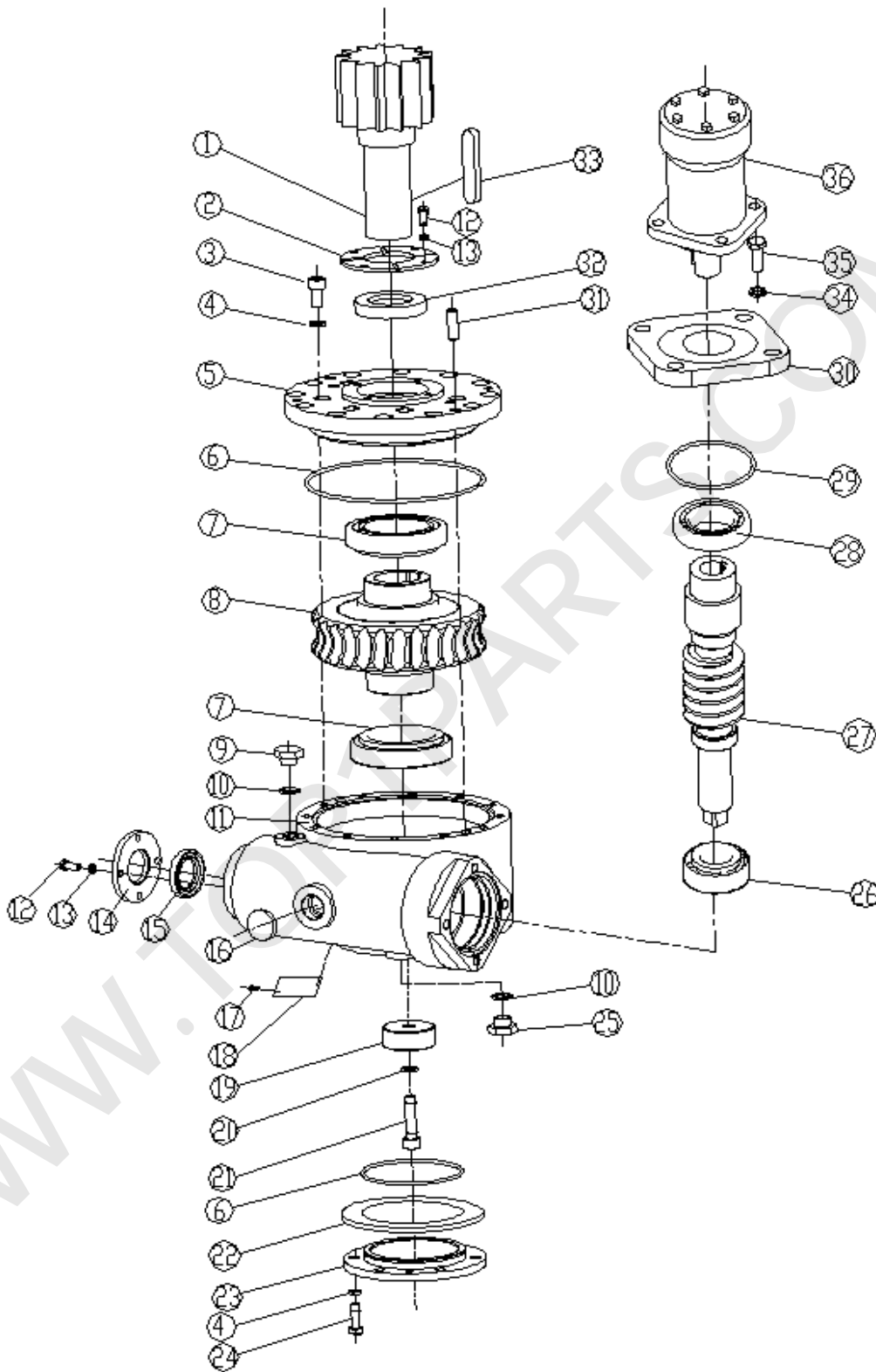


350100179 变幅油缸 Derricking cylinder

序号 No.	物料代码 Part number	名称 Part Name	推荐数量 Advised Q' ty	备注 Remark
1	——	钢背轴承 Φ40XΦ44-68 Bearing	2	
2	——	缸体 Cylinder	1	
3	——	轴用支撑环 d63×9.4-2.5 Support ring	2	
4	801100101	O 型圈 110X5.7 O -ring	1	GB1235-76
5	——	斯特封 d63-6.3 Seal	1 组	
6	——	轴封 d63-6.3 Seal for shaft	1	
7	——	防尘圈 d63X71-5/6.5 Dustproof ring	1	
8	——	缸盖 Cylinder cover	1	
9	——	孔用支撑环 d110×9.4-2.5 Support ring	1 组	
10	——	活塞 Piston	1	
11	——	隔套 Separate bush	1	
12	——	组合密封 Assembled seal	1 组	
13	801100090	O 型圈 50X3.5 O -ring	1	GB1235-76
14	——	螺母 M48X2 Nut	1	
15	——	紧定螺钉 M10X20 Tightness screw	1	GB79-85
16	——	活塞杆 Piston pole	1	
17	——	钢背轴承 Φ40XΦ44-50 Bearing	2	



358100130 HZ010C 回转减速机 Slewing speed reducer





358100130 HZ010C回转减速机 Slewing speed reducer

序号 No.	物料代码 Part number	名称 Part Name	推荐数量 Advised Q' ty	备注 Remark
1	358100039	齿轮轴 Gear shaft	1	
2	358100132	压板 I Press board	1	
3	805100309	螺钉 M6X16 Screw	12	GB/T70.1-2008
4	805300030	弹簧垫圈 6 Spring gasket	20	GB/T93-1987
5	358100040	端盖 I Cover	1	
6	803175833	O 形圈 130X3.0 O-ring	2	GB/T3452.1-1992
7	800500255	圆锥滚子轴承 30211 Bearing	2	GB/T297-1994
8	358100137	蜗轮 Turbo	1	
9	805801301	通气塞 M22X1.5 Air breathed plug	1	
10	805300032	组合密封 22 Assembled seal	22	
11	358100020	减速机壳体 Reducer shell	1	
12	805000389	螺栓 M5X10 Bolt	8	GB/5783-2000
13	805300109	弹簧垫圈 5 Spring gasket	8	GB/T93-1987
14	358100035	压板 II Press board	1	
15	803175113	骨架油封 FB25X40X7D Oil seal	1	GB13871-1992
16	801103120	油标 A20 Oil level indicator	1	GB1160.2-89
17	805502345	铆钉 2.5X6 Rivet	4	GB/T827-1986
18	358100135	回转减速机标牌 Scitcheon	1	
19	358100134	挡板 Baffle plate	1	
20	805302752	冻结自锁垫圈 M6 Gasket	1	
21	805100058	螺钉 M6X30 Screw	1	GB/T5783-2000
22	358100131	纸垫 Backing plate	2	
23	358100063	端盖 II Cover	1	

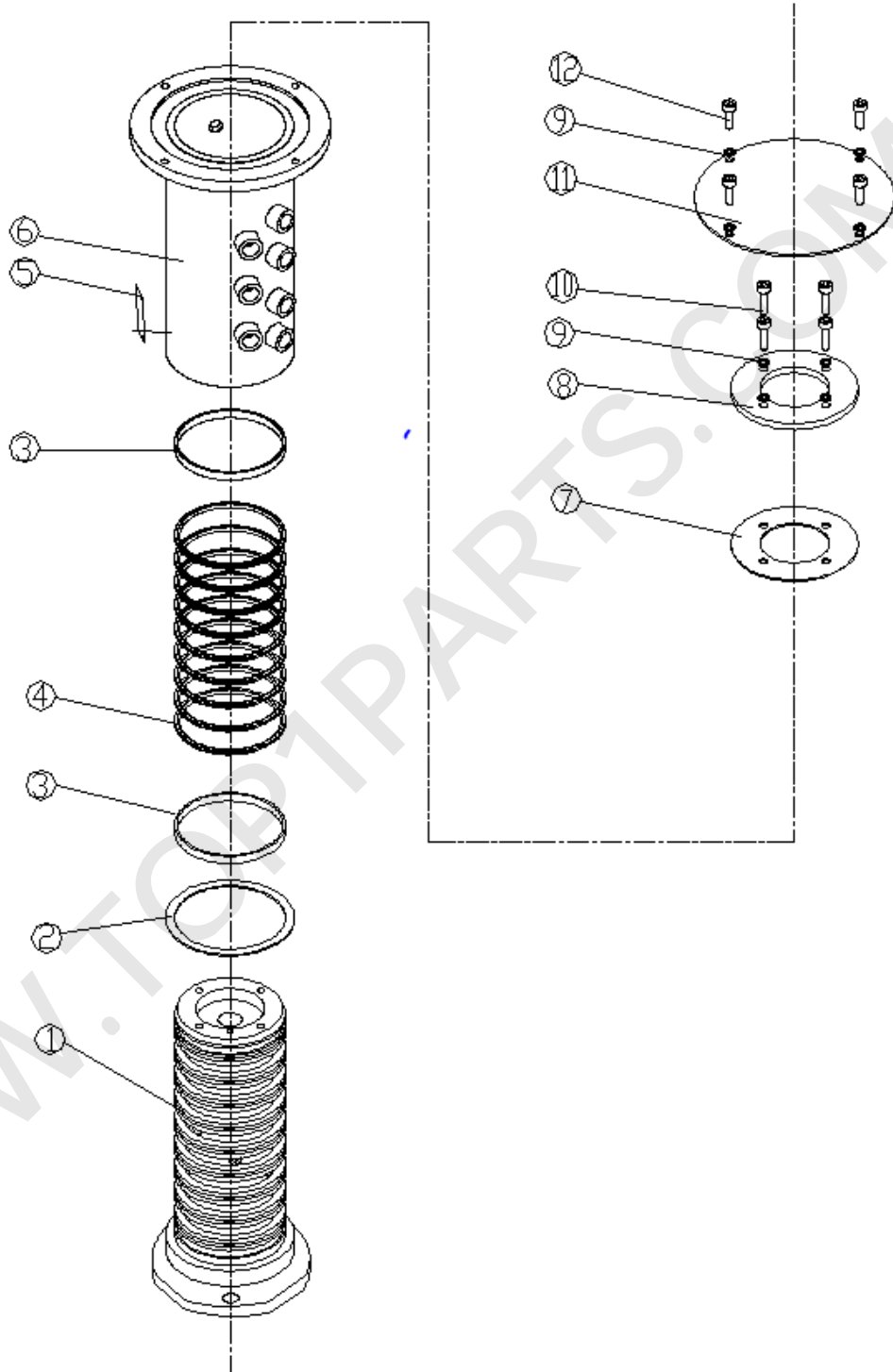


358100130 HZ010C 回转减速机 Slewing speed reducer

序号 No.	物料代码 Part number	名称 Part Name	推荐数量 Advised Q' ty	备注 Remark
24	805100059	螺钉 M6X20 Screw	8	GB/T70.1-2000
25	803165631	螺塞 M22X1.5 Screw thread plug	1	JB/ZQ4450-86
26	800513682	圆锥滚子轴承 30305 Bearing	1	GB/T297-1994
27	358100133	蜗杆 Worm	1	
28	800511514	轴承 32009 Bearing	2	GB/T297-1994
29	803174216	O 形圈 80X2.0 O-ring	2	GB/T3452.1-1992
30	358100136	连接套 Coupling sleeve	1	
31	805603526	销 D8×20 Pin	1	GB/T119.1-2000
32	803175119	骨架油封 FB35X50X8D Oil seal	1	GB/T13871-1992
33	805701037	键 10×50 Key	1	GB/T1096-2000
34	805300014	弹簧垫圈 10 Gasket	4	GB/T93-1987
35	805100117	螺钉 M10X50 Screw	4	GB/T5783-2000
36	803007755	马达 D50 Motor	1	BMF



358200022 HF021B 回转分配器 Slewing distributor



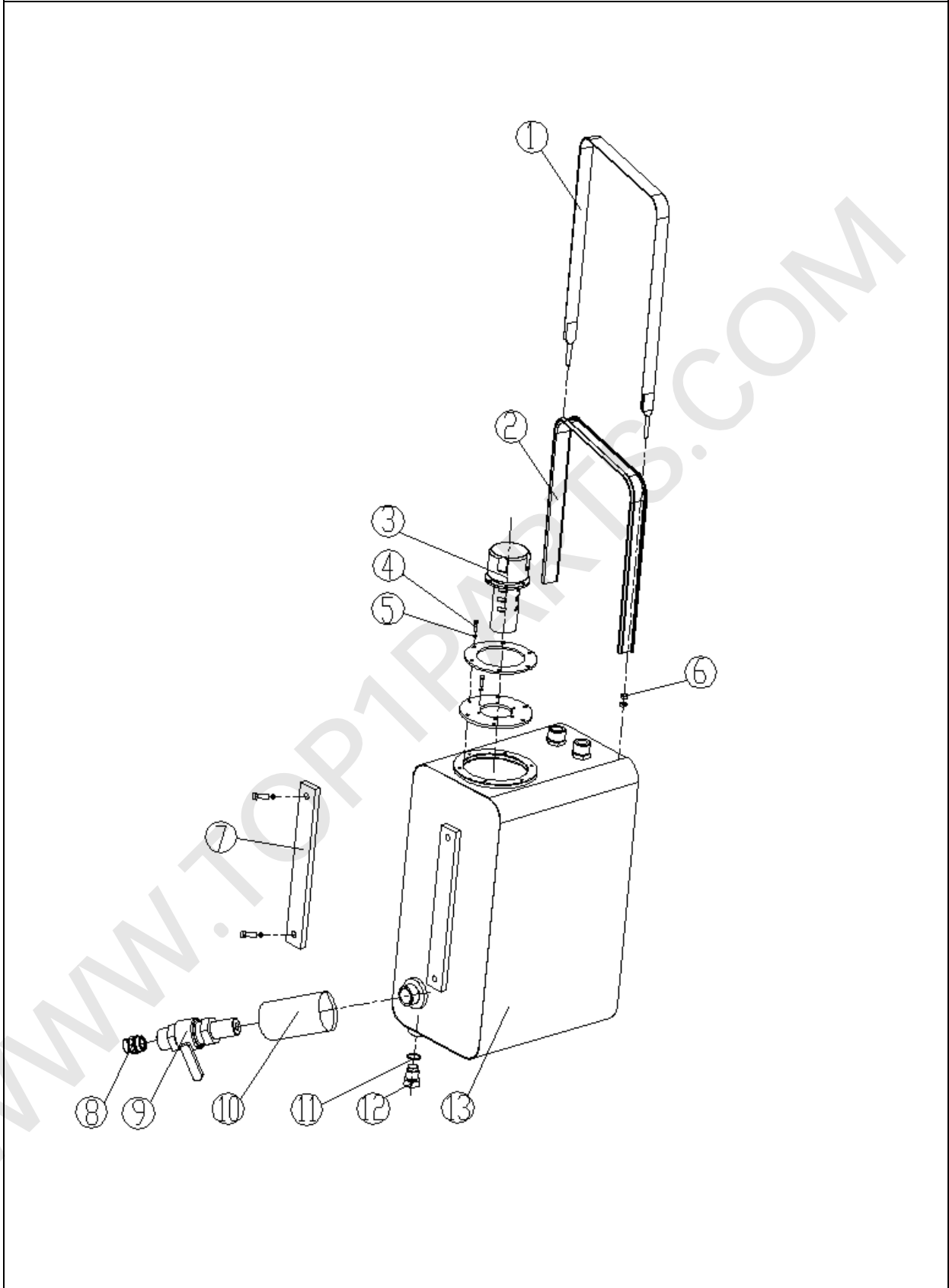


358200022 HF021B回转分配器 Slewing distributor

序号 No.	物料代码 Part number	名称 Part Name	推荐数量 Advised Q' ty	备注 Remark
1	358200006	芯 轴 Core shaft	1	
2	358200007	耐磨垫 Wearable cushion	1	
3	803175203	导向环 100/95X9.7 Pilot ring	2	
4	803175147	旋转密封 100/89X4.2 Rotary seal	9	
5	358200017	标牌 Nameplate	1	
6	358200023	分配体 Distributor	1	
7	358200008	耐磨垫 Wearable cushion	1	
8	358200009	压板 Cover board	1	
9	805300010	弹簧垫圈 8 Spring cushion	8	
10	805103950	开槽螺钉 M8X30 Screw	4	
11	358200010	盖板 Cover board	1	
12	805005234	螺栓 M8X16 Bolt	4	



350100172 液压油箱总成 Hydraulic oil tank



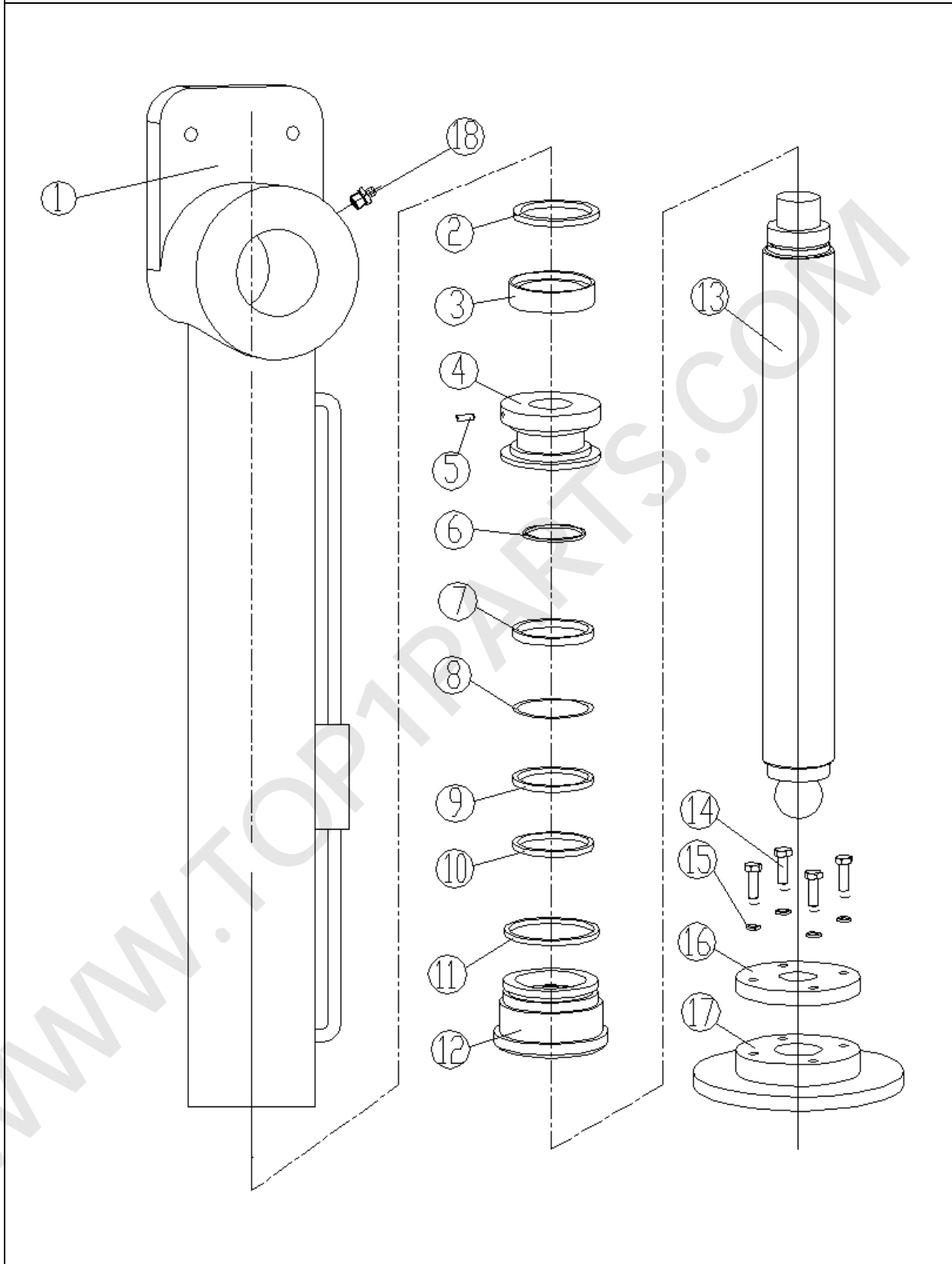


350100172 液压油箱总成 Hydraulic oil tank

序号 No.	物料代码 Part number	名称 Part Name	推荐数量 Advised Q' ty	备注 Remark
1	350100178	紧固带 Tightness belt	1	
2	350100173	缓冲垫 Buffer cushion	1	
3	803174203	空气滤清器 Air filter	1	QUQZ-20×1.0
4	805005559	螺栓 M4×15 Bolt	12	GB/T5781-2002
5	805300027	垫圈 4 Cushion ring	12	GB/T93-1987
6	805200048	螺母 M10 Nut	2	GB/T6170-2000
7	803202499	液位计 Level indicator	1	YWZ-250
8	359400055	接头体 Tie-in	1	
9	803008305	铜手柄球阀 Ball-valve	1	Q11F-25T
10	803174320	滤油器 Oil filter	1	WU-100-100T
11	805300038	垫圈 27 Cushion ring	1	JB/T982-1977
12	803174303	螺塞 M27×2 Screw thread plug	1	JB/T1000-1977
13	350100174	油箱体 Oil tank	1	



351400013 支腿油缸 Leg cylinder



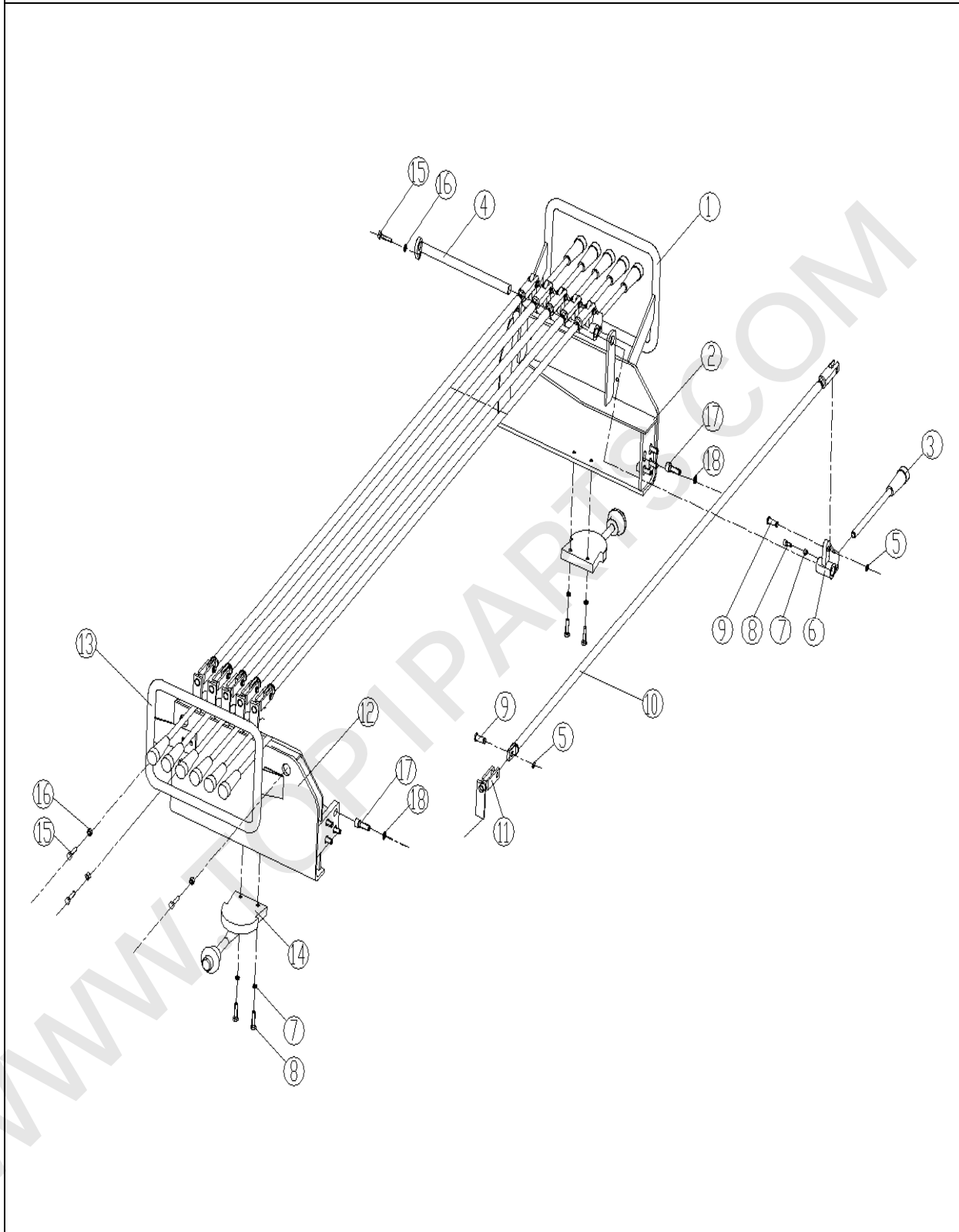


351400013 支腿油缸 Leg cylinder

序号 No.	物料代码 Part number	名称 Part Name	推荐数量 Advised Q'ty	备注 Remark
1	——	缸体 Cylinder		
2	——	孔用支承环 d63×9.4-2.5 Support ring	1	
3	——	组合密封 D63×47×18.4 Assembled seal	1	
4	——	活塞 Piston	1	
5	——	紧定螺钉 M8×10 Tightness screw	1	GB/T79-85
6	801100241	O 型圈 35×3.1 O-ring	1	GB1235-76
7	——	轴用支承环 d63×9.4-2.5 Support ring	2	
8	——	O 型圈 63×5.7 O-ring	1	
9	——	斯特封 CKS: 45 Seal	1 组	
10	——	轴封 d45×55×7 Shaft seal	1	
11	——	防尘圈 d45×53×5/6.5 Dustproof ring	2	
12	——	缸盖 Cylinder cover	1	
13	——	活塞杆 Piston pole	1	
14	——	内六角螺钉 M8×25 Screw	4	GB70-85
15	860102449	弹簧垫圈 8 Spring cushion	4	GB93-85
16	——	支脚盖 Cover board	1	
17	——	支脚座 Footplate	1	
18	801102884	油杯 M10×1 Oil cup	1	GB1152-89



350100154 操纵系统 Control system



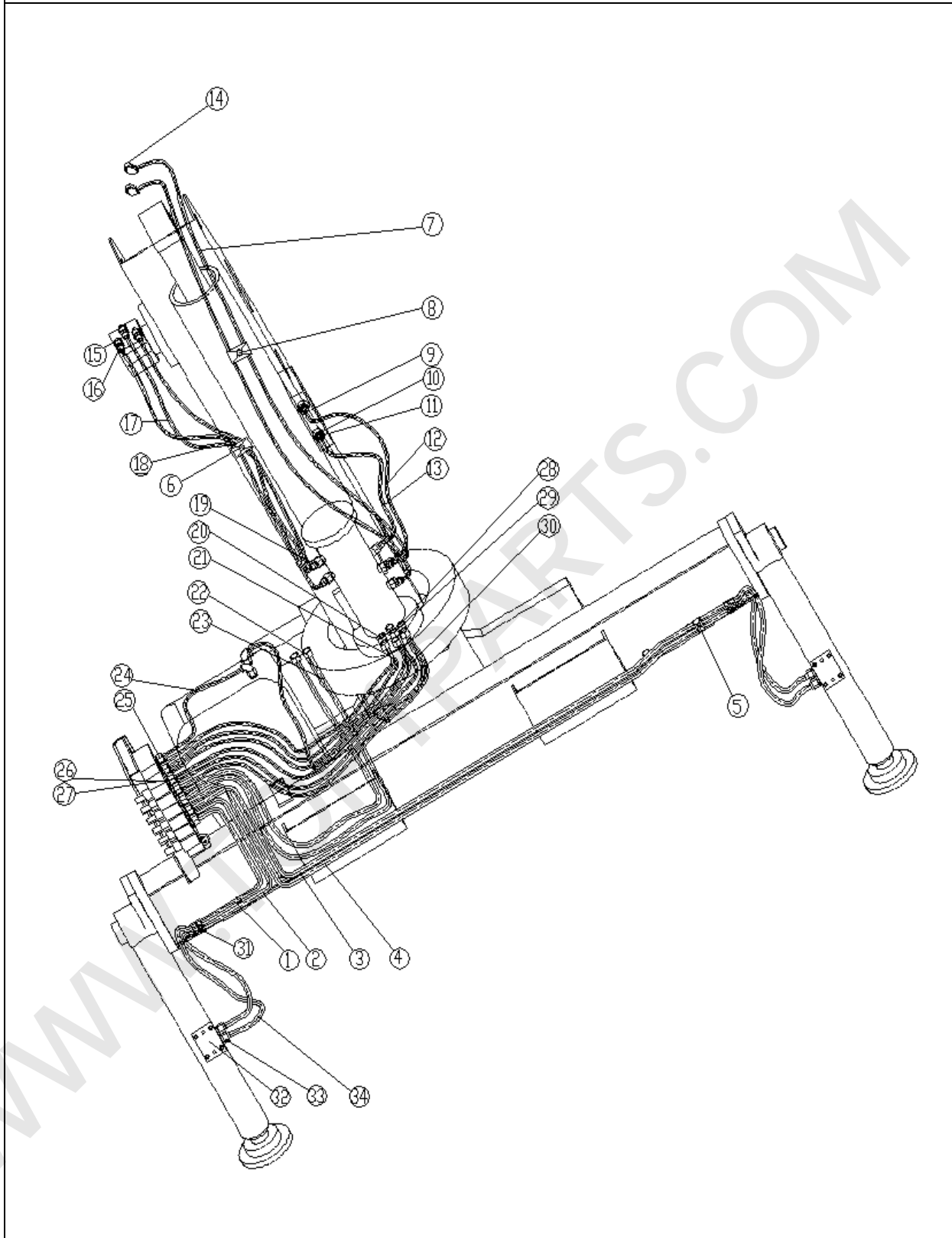


350100154 操纵系统 Control system

序号 No.	物料代码 Part number	名称 Part Name	推荐数量 Advised Q' ty	备注 Remark
1	350100001	左护栏 Left rail	1	
2	350100134	操纵架 Control bracket	1	
3	359400147	操纵手柄 Operation handle	12	
4	359400128	连接轴 Joint shaft	1	
5	805400032	挡圈 8 Check ring	12	GB/T894.1-1986
6	359400100	拨叉 Fork	6	
7	805200046	螺母 M5 Nut	6	GB/T6170-2000
8	805100210	螺钉 M5×16 Screw	6	GB/T70.1-2008
9	359400133	销轴 Pin shaft	12	
10	350100164	连杆 Linker	6	
11	359400118	拨叉 Fork	6	
12	350100166	阀架 Valve bracket	1	
13	350100002	右护栏 Right rail	1	
14	800305966	软轴 WJ108×3000 Soft shaft	2	WJ108
15	805100089	螺钉 M6×60 Screw	3	GB/T70.1-2000
16	805200053	螺母 M6 Nut	3	GB/T6170-2000
17	805000018	螺栓 M8×20 Bolt	8	GB/T5783-2000
18	805300069	垫圈 8 Cushion ring	8	GB/T97.1-2002



350100211 液压系统布管图 Hydraulic system layout





350100211 液压系统布管图 Hydraulic system layout

序号 No.	物料代码 Part number	名称 Part Name	推荐数量 Advised Q' ty	备注 Remark
1	350100137	弯管 Bend tube	1	
2	350100138	弯管 Bend tube	1	
3	350100139	弯管 Bend tube	1	
4	350100140	弯管 Bend tube	1	
5	359400104	管夹 Bend clip	2	
6	359400109	管夹 Bend clip	2	
7	803175656	软管总成 Tube	2	
8	359400107	管夹 Bend clip	2	
9	803007973	单向平衡阀 Balance valve	2	
10	803174462	直通接头 Straight joint	16	
11	803174525	直角组合接头 L-joint	6	
12	803175245	软管总成 Tube	1	
13	803175262	软管总成 Tube	1	
14	803174763	直通接头 Straight joint	2	
15	803174460	直通接头 Straight joint	2	
16	803174450	直通接头 Straight joint	1	
17	803175213	软管总成 Tube	1	
18	803175976	软管总成 Tube	2	
19	803164596	直通接头 Straight joint	1	
20	803174464	直通接头 Straight joint	6	
21	803175249	软管总成 Tube	6	
22	803174465	直通接头 Straight joint	8	
23	803175618	软管总成 Tube	2	



350100211 液压系统布管图 Hydraulic system layout

序号 No.	物料代码 Part number	名称 Part Name	推荐数量 Advised Q' ty	备注 Remark
24	803175624	软管总成 Tube	1	
25	803174471	直通接口 Straight joint	1	
26	803008052	六联多路阀 Multi-channel valve	1	
27	803174455	直通接口 Straight joint	1	
28	803175478	软管总成 Tube	1	
29	803174458	直通接头 Straight joint	4	
30	803008012	双向液压锁 Dual-hydraulic lock	2	
31	803174463	直通接头 Straight joint	4	
32	803175657	软管总成 Tube	4	



WWW.TOP1PARTS.COM



WWW.TOP1PARTS.COM